

# 10' TO 30' SQUARE STRAIGHT ALUMINUM POLES (SSA)

Job Name

Client Name

Job Location

Created By

Date

Product

Quote

Customer Approval

Date

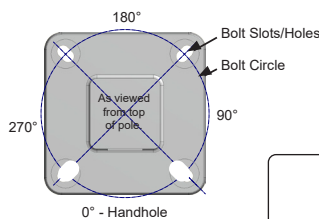
Sternberg Model	Pole Height	Shaft Size	Wall Thickness	Slotted SQ Base Width	Base Thickness	Handhole Size	Weight LBS	Bolt Circle	Bolt Proj +/- .25	DBL Nuted Anchor bolt ASTM F1554 GRADE 55 Galv Thread	Max Loading Capacities								Base Cover Options
											90 MPH 1.3-SEC. Gust		110 MPH 1.3-SEC GUST		130 MPH 1.3-SEC GUST		150 MPH 1.3-SEC Gust		
											MAX EPA 1 (SQ FT)	MAX WEIGHT (lbs)	MAX EPA 1 (SQ FT)	MAX WEIGHT (lbs)	MAX EPA 1 (SQ FT)	MAX WEIGHT (lbs)	MAX EPA 1 (SQ FT)	MAX WEIGHT (lbs)	
SSA10G400	10	4	0.125	9.94	0.375	2"x4"	39	8.5"-9.63"	3.13	3/4"	8.7	260	5.1	260	3.1	260	1.8	260	2403-4, ML900-4
SSA12G400	12	4	0.125	9.94	0.375	2"x4"	43	8.5"-9.63"	3.13	3/4"	6.5	260	3.5	260	1.8	260	0.7	260	2403-4, ML900-4
SSA14G400	14	4	0.125	9.94	0.375	2"x4"	48	8.5"-9.63"	3.13	3/4"	4	200	1.9	200	0.7	200	-	200	2403-4, ML900-4
SSA16G400	16	4	0.125	9.94	0.375	2"x4"	52	8.5"-9.63"	3.13	3/4"	2.7	200	0.8	200	-	200	-	200	2403-4, ML900-4
SSA16T400	16	4	0.188	9.94	0.375	2"x4"	61	8.5"-9.63"	3.13	3/4"	5.4	200	2.6	200	1	200	-	200	2403-4, ML900-4
SSA18G400	18	4	0.125	9.94	0.375	2"x4"	57	8.5"-9.63"	3.13	3/4"	1.8	100	-	100	-	100	-	100	2403-4, ML900-4
SSA18T400	18	4	0.188	9.94	0.375	2"x4"	68	8.5"-9.63"	3.13	3/4"	4.1	150	1.6	150	-	150	-	150	2403-4, ML900-4
SSA18T500	18	5	0.188	11.56	0.500	2"x4"	87	10.5"-11.5"	3.25	3/4"	8.1	260	4	260	1.6	260	-	260	2403-5, ML900-5
SSA20T400	20	4	0.188	9.94	0.375	2"x4"	75	8.5"-9.63"	3.13	3/4"	2.8	150	-	150	-	150	-	150	2403-4, ML900-4
SSA20T500	20	5	0.188	11.56	0.500	2"x4"	96	10.5"-11.5"	3.25	3/4"	6.5	150	2.7	150	-	150	-	150	2403-5, ML900-5
SSA20T600	20	6	0.188	12.75	0.563	2-5/8"x5"	151	12"-13"	4.00	1.0"	11.4	150	5.6	150	2.2	150	-	150	2404-6
SSA20E600	20	6	0.250	12.75	0.563	2-5/8"x5"	184	12"-13"	4.00	1.0"	16.4	260	8.9	260	4.6	260	1.9	260	2404-6
SSA25T500	25	5	0.188	11.56	0.500	2"x4"	118	10.5"-11.5"	3.25	3/4"	2.7	100	-	100	-	100	-	100	2403-5, ML900-5
SSA25T600	25	6	0.188	12.75	0.563	2-5/8"x5"	177	12"-13"	4.00	1.0"	5.7	260	1.1	260	-	260	-	260	2404-6
SSA25E600	25	6	0.250	12.75	0.563	2-5/8"x5"	219	12"-13"	4.00	1.0"	9.9	260	3.9	260	-	260	-	260	2404-6
SSA30E600 *	30	6	0.250	12.75	0.563	2-5/8"x5"	253	12"-13"	4.00	1.0"	4.4	260	-	260	-	260	-	260	2404-6

CROSS SECTION	MODEL NUMBER	FIXTURE MOUNTING	BASE COVER	OPTIONS	COLOR
SSA					
SSA = Square Straight Aluminum	SSA10G400 SSA20T400 SSA12G400 SSA20T500 SSA14G400 SSA20T600 SSA16G400 SSA20E600 SSA16T400 SSA25T500 SSA18G400 SSA25T600 SSA18T400 SSA25E600 SSA18T500 SSA30E600*	<b>Drill Mounting</b> D1 = 1 Luminaire D2 = 2 @ 180° D4 = 4 @ 90° D5 = 2 @ 90° D6 = 3 @ 90°  <b>Tenon Mounting</b> P2 = 2.38" OD x 4.00" P3 = 3.00" OD x 3.00" P4 = 4.00" OD x 6.00"	2403-4 2403-5 2404-6 ML900-4 ML900-5	See Accessories at <a href="http://www.sternberglighting.com">www.sternberglighting.com</a> (Please specify with code)	<b>UGMT</b> - Urban Gun Metal Textured <b>UGM</b> - Urban Gun Metal Matte <b>UBT</b> - Urban Bronze Textured <b>ULBT</b> - Urban Light Bronze Textured <b>USLT</b> - Urban Silver Textured <b>UWHT</b> - Urban White Textured <b>UCHS</b> - Urban Champagne Satin Smooth <b>UB</b> - Urban Bronze Matte <b>ULB</b> - Urban Light Bronze Matte <b>USL</b> - Urban Silver Matte <b>UWH</b> - Urban White Matte <b>BKT</b> - Black Textured

\* Indicates vibration dampener installed

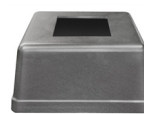


Anchor Base Detail

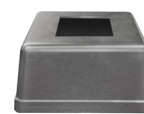


4", 5" or 6" Rounded Corner Profile .75" Corner Radius

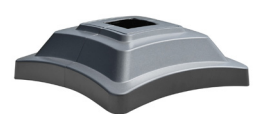
OPTIONAL BASE COVERS



**Square 2403**  
13" Sq. x 6-1/2" H  
Throat Size 4" or 5" Sq.  
2403-4  
2403-5



**Square 2404**  
14-1/2" Sq. x 7-1/4" H  
Throat Size 6" Sq.  
2404-6



**Square ML900**  
17.4" Sq. x 5.9" H  
Throat Size 4" or 5" Sq.  
ML900-4  
ML900-5



\* Factory installed vibration damper.