

20' TO 35' ROUND TAPERED STEEL POLES (RTS)

Job Name

Client Name

Job Location

Created By

Date

Product

Quote

Customer Approval

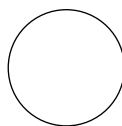
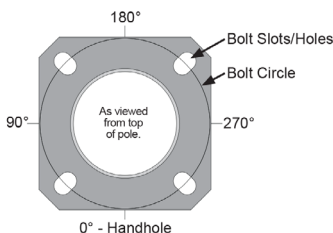
Date

Sternberg Model	Pole Height	Shaft Size	Wall Thickness	Slotted Base Width SQ	Base Thickness	Hand-hole Size	Weight Lbs	Bolt Circle	Bolt Proj +/-	DBL Nutted Anchor bolt ASTM F1554 GRADE 55 Galv Thread	Max Loading Capacities								Base Cover Options
											90 MPH w/1.3 Gust		110MPH w/1.3 Gust		130MPH w/1.3 Gust		150MPH w/1.3 Gust		
											MAX EPA 1 (SQ FT)	MAX WEIGHT (lbs)	MAX EPA 1 (SQ FT)	MAX WEIGHT (lbs)	MAX EPA 1 (SQ FT)	MAX WEIGHT (lbs)	MAX EPA 1 (SQ FT)	MAX WEIGHT (lbs)	
RTS20F590	20	5.9-3.1"	11GA	10"	0.875	3 x 5	140	9.00	4.13	1 x 36 x 4	15.1	377	10.5	262	7.4	185	5.5	138	2401-5.9, 2403-5.9
RTS20F650	20	6.5-3.7"	11GA	10.5"	0.875	4 x 6.5	160	9.50	4.13	1 x 36 x 4	19.3	482	13.5	335	9.5	238	6.9	173	2401-6.5, 2403-6.5
RTS25F590	25	5.9-2.4"	11GA	10"	0.875	3 x 5	155	9.00	4.13	1 x 36 x 4	9.9	247	6.9	173	4.8	119	3.5	88	2401-5.9, 2403-5.9
RTS25F700	25	7.0-3.5"	11GA	10.88"	0.875	4 x 6.5	200	10.00	4.13	1 x 36 x 4	16.2	405	11.2	280	7.8	194	5.7	143	2402-7, 2403-7
RTS25N700	25	7.0-3.5	7GA	10.88"	1.000	4 x 6.5	280	10.00	4.25	1 x 36 x 4	24.0	625	16.5	413	11.7	293	8.5	213	2402-7, 2403-7
RTS30F660	30	6.6-2.4"	11GA	10.5"	0.875	4 x 6.5	200	9.50	4.13	1 x 36 x 4	9.3	232	6.5	163	4.6	115	3.3	83	2401-6.6, 2403-6.6
RTS30F800	30	8.0-3.8	11GA	11.50"	0.875	4 x 6.5	265	11.00	4.13	1 x 36 x 4	14.9	373	10.0	250	6.8	168	4.7	118	2402-8, 2403-8
RTS30N800	30	8.0-3.8"	7GA	11.50"	1.250	4 x 6.5	380	11.00	5.00	1.25 x 42 x 6	27.0	675	18.4	460	13.0	325	9.3	233	2402-8, 2403-8
RTS35F730	35	7.3-2.4	11GA	11.25"	0.875	4 x 6.5	250	10.50	4.13	1 x 36 x 4	8.9	222	6.3	156	4.4	110	3.1	78	2402-7.3, 2403-7.3
RTS35F850	35	8.5-3.6"	11GA	12.00"	1.000	4 x 6.5	315	11.50	4.25	1 x 36 x 4	15.1	377	10.5	263	7.2	180	4.8	120	2402-8.5, 2404-8.5
RTS35F950	35	9.5-4.6"	11GA	13.00"	1.000	4 x 6.5	370	13.00	4.25	1 x 36 x 4	18.2	455	12.0	300	7.8	194	5.2	130	2402-9.5, 2404-9.5

CROSS SECTION	MODEL NUMBER	FIXTURE MOUNTING	BASE COVER	OPTIONS	COLOR
RTS					
RTS = Round Tapered Steel	RTS20F590 RTS30F800 RTS20F650 RTS30N800 RTS25F590 RTS35F730 RTS25F700 RTS35F850 RTS25N700 RTS35F950 RTS30F660	Arm Mounting D1 = 1 Luminaire D2 = 2 @ 180° D3 = 3 @ 120° D4 = 4 @ 90° D5 = 2 @ 90° D6 = 3 @ 90° Tenon Mounting P2 = 2.38" OD X 4.00" P3 = 3.00" OD x 3.00" P4 = 4.00" OD x 6.00"	2401-5.9 2403-5.9 2401-6.5 2403-6.5 2401-6.6 2403-6.6 2402-7 2403-7 2402-7.3 2403-7.3 2402-8 2404-8.5 2402-8.5 2404-9.5 2402-9.5	See Accessories at www.sternberglighting.com (Please specify with code)	UGMT - Urban Gun Metal Textured UGM - Urban Gun Metal Matte UBT - Urban Bronze Textured ULBT - Urban Light Bronze Textured USLT - Urban Silver Textured UWHT - Urban White Textured UCHS - Urban Champagne Satin Smooth UB - Urban Bronze Matte ULB - Urban Light Bronze Matte USL - Urban Silver Matte UWH - Urban White Matte BKT - Black Textured

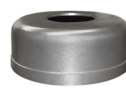


Anchor Base Detail

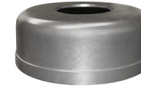


5.9" - 9.5" Dia.

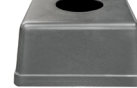
OPTIONAL BASE COVERS



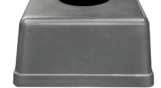
Round 2401
15" Dia. x 6" H
2401-5.9
2401-6.5
2401-6.6



Round 2402
20" Dia. x 7-1/4" H
2402-7
2402-7.3
2402-8
2402-8.5
2402-9.5



Square 2403
13" Sq. x 6-1/2" H
2403-5.9
2403-6.5
2403-6.6
2403-7
2403-7.3
2403-8



Square 2404
14-1/2" Sq. x 7-1/4" H
2404-8.5
2404-9.5

