



RW404CC COLOR CHANGING RIALTA

LED

DMX Controller available upon request.
(Click here to view DMX Controller sheet)

DIMENSIONS
8" Ø
6" to 18" TALL

7 YEAR WARRANTY

WATTAGE
50w

UL LISTED

CLICK FOR FAQ'S

Rated IP66

JOB NAME _____

FIXTURE TYPE _____

MEMO _____

BUILD A PART NUMBER

ORDERING EXAMPLE: **RW404CC-8'-16LCC-TS-MDL-WRD/BKT**

Model	Height	LED	Distribution Type	Driver	DMX Network	Option Fuse	Option Ground Fault Breaker	Finish

Model

- RW404CC

Overall Height (In Feet)

- ___' (Available from 6'-18')

LED

- 16LCC

Distribution Type

- TS (Symmetrical)

Driver

- MDL (120V-277V)

DMX Network

- WRD: Wired DMX
- WLS: Wireless DMX

¹Requires 7' minimum height.

Options (Click here to view paint options sheet)

- FHD² Double Fuse and Holder
- GFI LPIUC³ 15 Amp duplex GFCI receptacles with a low-profile in-use cover

²Ships loose for installation in base.

³Requires 8' minimum height.

Finish

Standard Finishes⁴ (Click here to view paint finish sheet)

- BKT Black Textured
- WHT White Textured
- PGT Park Green Textured
- ABZT Architectural Medium Bronze Textured
- DBT Dark Bronze Textured

⁴Smooth finishes are available upon request.

Sternberg Select Finishes

- VG Verde Green
- SI Swedish Iron
- OWGT Old World Gray Textured

Sternberg Urban Finishes

(Click here to view paint finish sheet)

- UGMT Gun Metal Textured
- UGM Gun Metal Matte
- UBT Urban Bronze Textured
- UB Urban Bronze Matte
- ULBT Urban Light Bronze Textured
- ULB Urban Light Bronze Matte
- USLT Urban Silver Textured
- USL Urban Silver Matte
- UWHT Urban White Textured
- UWH Urban White Matte
- UCHS Urban Champagne Satin Smooth

Custom Finishes⁵

- CM Custom Match
- OI Old Iron
- RT Rust
- WBR Weathered Brown
- CD Cedar
- WBK Weathered Black
- TT Two Tone

⁵Custom colors require upcharge.

Specifications

General

The decorative post top luminaire is a large scale area-light with an urban theme. It features a cylindrical body, a frosted acrylic lens, and 8-bit RGBW color. It provides festive, user selectable, ambient lighting in a vertical format. The luminaire shall be UL listed. An optional programmable touch screen interface is available.

Construction

The luminaire shall rest upon an 8" diameter tube. The tubing shall be made of ASTM 6063 extruded aluminum and tempered to a T6 condition. The luminaire's frame shall be composed of cast, extruded, or machined aluminum components. The luminaire attaches to the tube using a twist lock mechanism.

LED's

The luminaire shall use RGBW LEDs. The LEDs are protected from moisture and corrosion by 1-3 mils of conformal coating. A quick connector allows easy connection between the luminaire and electronics below. They shall not contain lead, mercury or any other hazardous substances and shall be ROHS compliant.

Optics

The luminaire shall be provided with individual collimating optics to provide uniform light distribution in the vertical and horizontal lens space.

Electronic Driver

The LED driver shall be U.L. recognized. It shall be securely mounted inside the extruded aluminum tubing just below the luminaire for optimized longevity. It shall be supplied with a quick disconnect electrical connector on the power supply providing easy power connections. It shall have DC output voltage, constant current design, 50/60Hz. A DMX address will be assigned to each driver in the factory.

DMX Network

LED color changing shall utilize a DMX protocol for 1 Universe (512 channels). The network shall consist of a DMX controller and power supply, a DMX signal network (either wired

See next page



SternbergLighting

ESTABLISHED 1923 / EMPLOYEE OWNED

800-621-3376
555 Lawrence Ave., Roselle, IL 60172
info@sternberglighting.com
www.sternberglighting.com

6/18 STERNBERG LIGHTING. ALL RIGHTS RESERVED. PRINTED IN THE USA.

RW404CC COLOR CHANGING RIALTA

LED

or wireless) and luminaires capable of being controlled by a DMX signal.

For wireless networks: a DMX transmitter will be supplied with the DMX controller. The DMX wireless network operates in the WI-FI spectrum. No FCC licensing is needed. A DMX receiver is provided for each luminaire. For more details contact factory.

DMX Control

[\(Click here to view DMX Controller sheet\)](#)

A DMX controller is an available option with DMX luminaire purchase. Only one controller is needed per universe. The controller shall be a 4.3" capacitive touch screen with a small power

pack. The controller shall come with a basic control interface suitable for dimming up to 10 luminaires, selection color, and 6-10 preset operational configurations. The interface can be customized via the original manufacturer's software.

Installation

Four 5/8" diameter, hot-dipped galvanized "L" type anchor bolts shall be provided with the column for anchorage, they shall be mounted in a 4-1/2" bolt circle. The column will be provided with an access door which shall be secured with tamper proof stainless steel

hardware, includes a grounding stud behind the access door.

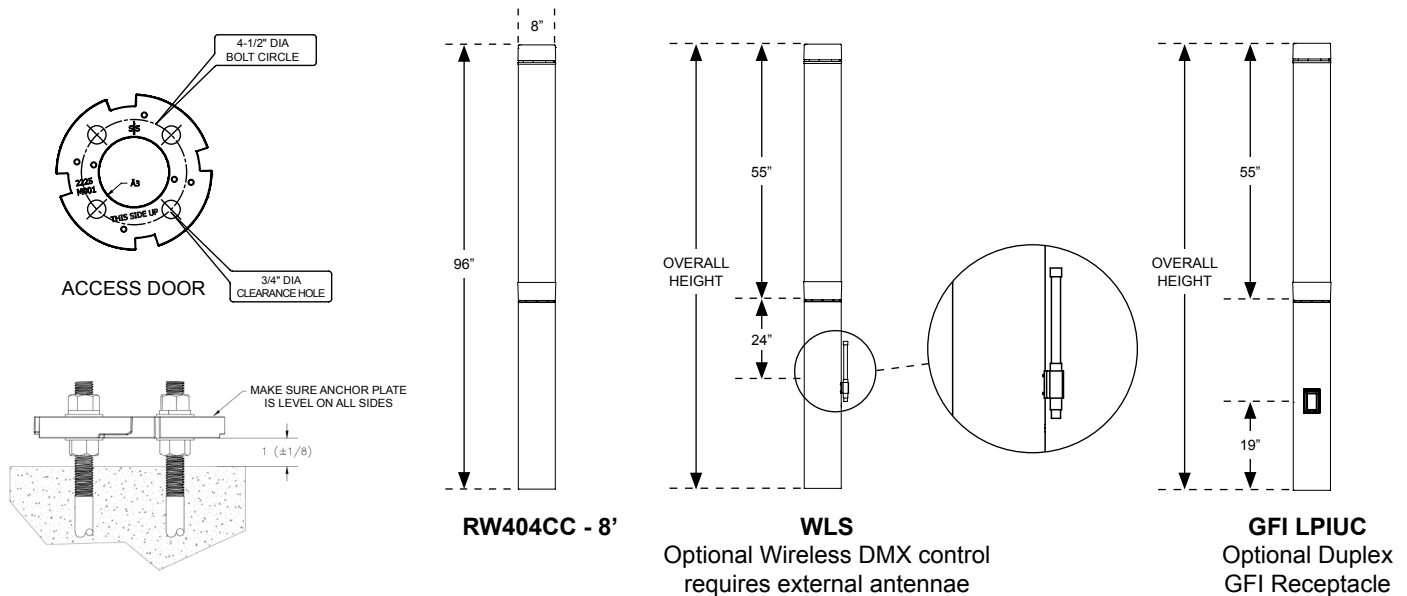
Warranty

Seven-year limited warranty. See product and finish warranty guide for details.

Finish

Refer to website for details.

For more details contact factory.



Post Top Mounting Details

