



RIALTA® RT4xx

The RIALTA® RT4xx luminaire is a cylindrical, three legged, open cage ground mounted luminaire designed to bring ambiance to any project by providing a performance lighting package in a vertical form. The 8" cast aluminum cage cylinder adds a 12" high luminous element that adds visual interest by illuminating from the top casting and giving the effect of moon light from within its cage form. The RT4xx uses one round LED array configuration with a choice of Clear Acrylic or SV2 lens to deliver IES types 5, 4, 3, 3R and 2 distribution with high efficiency and low wattage consumption. A variety of LED color temperatures are available. A choice of several popular polyester powder coat colors are also available.

PROJECT: _____

TYPE: _____

ORDERING EXAMPLE: BL-RT442-26L45T5-MDL05-CA-FHD/UGMT

RT4__											
MOUNTING CONFIG.	SERIES	HEIGHT (H) IN.	NO. OF LEDES	COLOR TEMP K	DISTRIBUTION TYPE	DRIVER	LENS	CONTROLS	DUAL FUSE & HOLDER	COLOR	
BL	Post Top Mounted Luminaire	36	26L	27(00) K	T2	MDL03	CA	OPTIONS		UGMT	UGM
		42		35(00) K	T3	MDL05	SV2	PEC	FHD	UBT	UB
		48		45(00) K	T3R	MDH03		PEC4		ULBT	ULB
					T4	MDH05				USLT	USL
					T5					UWHT	UWH
										UCHS	BKT

BL = Bollard

Product Specs

Optical

- IP66 rated optic module.
- Available in IES Types 2, 3, 3R, 4 and 5 distribution.
- Utilizes high output, high brightness LEDs.
- Minimum of 70 CRI, CCT 2700, 3500 and 4500K. Call factory for custom CCT.
- LM-79 and LM-80 tests in accordance with IESNA standards.
- Lumen depreciation rating L70>100,000 hrs. projected per TM-21 guideline using 525mA drive at 25°C ambient.
- RoHS Compliant.

Electrical

- 120-277 volt and 347-480 volt available.
- Minimum drivers power factor: >0.9.
- Electrical surge protection in accordance with IEEE/ANSI C62.41.2 guidelines.
- UL listed in U.S. and Canada.

Mechanical

- Cast aluminum heat sink, cylindrical lens and twist lock housing.
- Spun aluminum heat sink cover.
- Twist-lock housing installs on 8" OD welded tenon.
- Pole door driver access and removeable driver tray.

Controls

- Supplied with dimmable driver.
- PEC: Optional electronic button photocell (120v-277v).
- PEC4: Optional electronic button photocell (480v).

Finish

- Durable, color retentive powder coat finish.

Warranty & Standards

LED Systems and Drivers - 7 years.
All fixtures shall be free from defects in materials and workmanship for a period of 7 years from the date of manufacture. The luminaire manufacturer shall warrant the LED boards/system, during the stated warranty period, against failure defined as more than 10 percent of non-operating LEDs.

Housing

Housing shall consist of 0.188" wall extruded aluminum and A360 cast top and bottom lens retaining assemblies. Minimum height overall with shaft is 36".

Drivers:

- MDL03: 350mA, 120-277V
- MDL05: 525mA, 120-277V
- MDH03: 350mA, 347-480V
- MDH05: 525mA, 347-480V

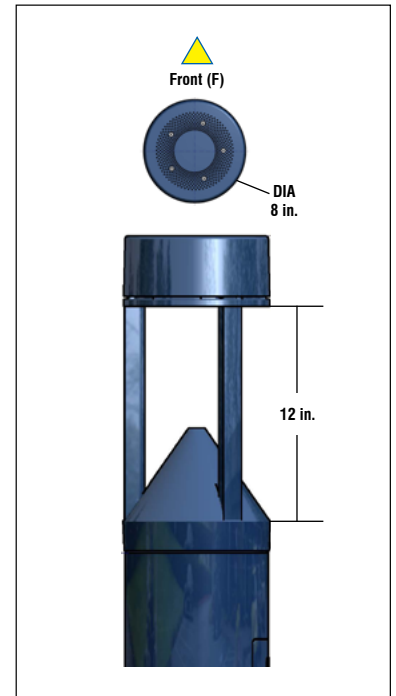
Lens:

- CA - Clear Flat Acrylic
- SV2 - Flat heavy diffuse acrylic

Colors:

- UGMT - Urban Gun Metal Textured
- UBT - Urban Bronze Textured
- ULBT - Urban Light Bronze Textured
- USLT - Urban Silver Textured
- UWHT - Urban White Textured
- UCHS - Urban Champagne Satin Smooth
- UGM - Urban Gun Metal Matte
- UB - Urban Bronze Matte
- ULB - Urban Light Bronze Matte
- USL - Urban Silver Matte
- UWH - Urban White Matte
- BKT - Black Textured

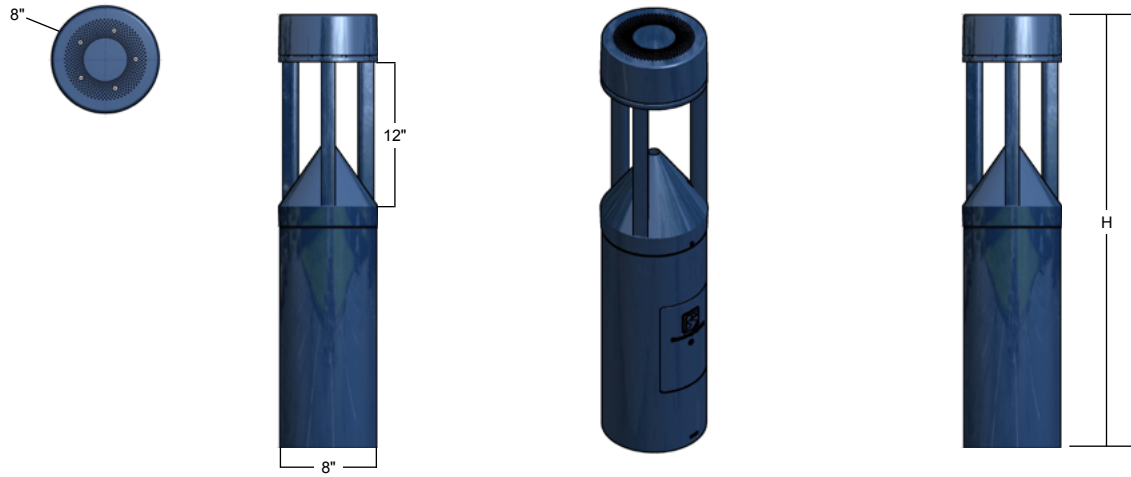
Distribution Orientation:



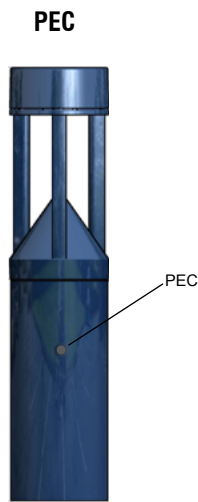
Performance

MODEL #	T3 DELIVERED LUMENS	EFFICACY (LPW)	T3R DELIVERED LUMENS	EFFICACY (LPW)	T4 DELIVERED LUMENS	EFFICACY (LPW)	T5 DELIVERED LUMENS	EFFICACY (LPW)	WATTAGE
RT436CA-26L27T_-MD_03	1995	64.5	2130	68.8	2160	69.7	2095	67.6	31
RT436CA-26L35T_-MD_03	2280	73.6	2430	78.5	2465	79.6	2390	77.1	31
RT436CA-26L45T_-MD_03	2560	82.6	2735	88.2	2770	89.4	2685	86.7	31
RT436CA-26L27T_-MD_05	2825	60.2	3010	64.0	2955	62.9	2980	63.4	47
RT436CA-26L35T_-MD_05	3225	68.7	3435	73.1	3375	71.8	3400	72.4	47
RT436CA-26L45T_-MD_05	3625	77.1	3855	82.1	3790	80.7	3820	81.3	47

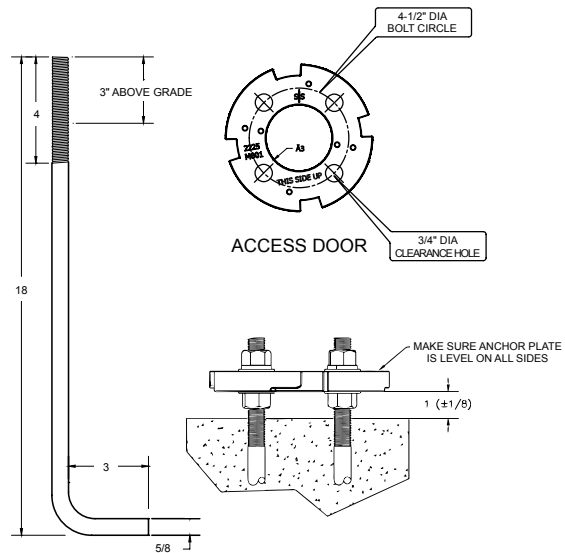
Product Dimensions and Features



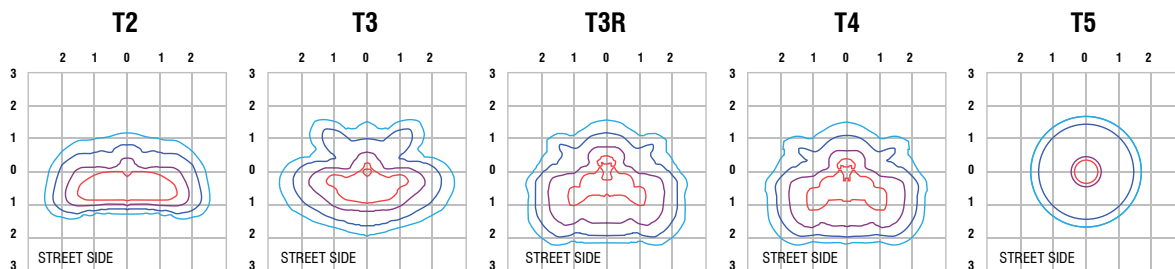
Options



Bolt Circle



ISO Footcandle Plots



All published luminaire photometric testing performed to IESNA LM-79 standards by NVLAP, certified laboratory. ISO footcandle plots demonstrate the RIALTA'S light patterns only. Not for total fixture output. For complete specifications and IES files, see website.