



806LED-346B HARBORTOWN SERIES

LED BOLLARDS

DIMENSIONS
9-1/2" Ø
24" to 48"
TALL

7 YEAR WARRANTY

LUMEN RANGE
455 to
1,005

LIFE SPAN
L70
MINIMUM
100,000
HOURS

UL LISTED

CLICK FOR FAQ'S

JOB NAME _____

FIXTURE TYPE _____

MEMO _____

BUILD A PART NUMBER

ORDERING EXAMPLE: **806LED-346B-48"-IL40T5-MDLO4-CL2/BKT**

Model	Height	LED	CCT	Type	Driver	Option Chain Loop	Option Fuse	Option Photocell	Option Receptacle	Finish

Model

- 806LED-346B

Overall Height (In Inches)

- ___" (Available from 24"-48")

LED

- IL

CCT - Color Temperature (K)

- 27(00) • 30(00) • 40(00) • 50(00)

Type

- T2 • T3 • T4 • T5

Driver

- MDLO2 (120V-277V, 200mA)
- MDLO4 (120V-277V, 400mA)

Options (Click here to view paint options sheet)

- CL1 Single Chain Loop
- CL2 Double Chain Loops at 180°
- FHD¹ Double Fuse and Holder
- PCD Electronic Button Photocontrol, mounted on an access door (120V-277V)
- PCD4 Electronic Button Photocontrol, mounted on an access door (480V)
- GFI IUC 15 Amp duplex GFCI receptacles with a standard in-use cover
- USB LPIUC 15 Amp duplex USB/Receptacle combo with a low-profile in-use cover (NON-GFI)

¹Ships loose for installation in base.

Finish

Standard Finishes² (Click here to view paint finish sheet)

- BKT Black Textured
- WHT White Textured
- PGT Park Green Textured

- ABZT Architectural Medium Bronze Textured
- DBT Dark Bronze Textured

²Smooth finishes are available upon request.

Sternberg Select Finishes

- VG Verde Green
- SI Swedish Iron
- OWGT Old World Gray Textured

Sternberg Urban Finishes

(Click here to view paint finish sheet)

- UGMT Gun Metal Textured
- UGM Gun Metal Matte
- UBT Urban Bronze Textured
- UB Urban Bronze Matte
- ULBT Urban Light Bronze Textured
- ULB Urban Light Bronze Matte
- USLT Urban Silver Textured
- USL Urban Silver Matte
- UWHT Urban White Textured
- UWH Urban White Matte
- UCHS Urban Champagne Satin Smooth

Custom Finishes³

- CM Custom Match
- OI Old Iron
- RT Rust
- WBR Weathered Brown
- CD Cedar
- WBK Weathered Black
- TT Two Tone

³Custom colors require upcharge.

Specifications

General

The decorative LED bollard is a small scale, maritime theme design. It features a cylindrical body, decorative aluminum cage, dome roof and a clear glass Fresnel lens. The bollard shall be UL listed in US and Canada.

Construction

The bollard shaft shall be 6" diameter extruded round tubing having a wall thickness of .250" and made of ASTM 6063 extruded aluminum and tempered to a T6 condition. The shaft will be appointed with an LED head, the fitter portion shall have four (4) stainless steel allen head screws which secures the connection.

LED's

The luminaire shall use high output, high brightness LED's, consisting of a two piece assembly complete with Chip on Board (COB) LED component and COB holder frame. The LED's and printed circuit boards shall be 100% recyclable; they shall also be protected from moisture and corrosion by a conformal coating of 1 to 3 mils. They shall not contain lead, mercury or any other hazardous substances and shall be RoHS compliant. The LED life rating data shall be determined in accordance with IESNA LM-80. The High Performance white LED's will have a life expectancy of approximately 100,000 hours with not less than 70% of original brightness (lumen maintenance), rated at 25°C. The High Brightness, High Output LED's shall be 4000K (2700K, 3000K or 5000K option) color temperature with a minimum of 70 CRI. Consult factory for custom color CCT. The luminaire shall have a minimum _____ (see table) delivered initial lumen rating when operated at steady state with an average ambient temperature of 25°C (77°F).

Optics

The luminaire shall be provided with individual, molded silicone refractor type optics applied to each COB (Chip On Board) LED assembly. The optic shall be at least 92% efficient while providing superior thermal, UV and impact resistance for the COB assembly.

See next page



SternbergLighting

ESTABLISHED 1923 / EMPLOYEE OWNED

800-621-3376
555 Lawrence Ave., Roselle, IL 60172
info@sternberglighting.com
www.sternberglighting.com

806LED-346B HARBORTOWN SERIES

LED BOLLARDS

The optic ensures precise light control while providing cutoff control that limits or contains up-light. The luminaire shall provide Type ____ (2, 3, 4 or 5) light distribution per the IESNA classifications. Testing shall be done in accordance with IESNA LM-79.

Electronic Driver

The LED driver shall be U.L. Recognized. It shall be securely mounted inside the bollard, for optimized performance and longevity. It shall be supplied with a quick-disconnect electrical connector on the power supply, providing easy power connections and fixture installation. It shall have overload as well as short circuit protection, and have a DC voltage output, constant current design, 50/60HZ. It shall be supplied with line-ground, line-neutral and

neutral-ground electrical surge protection in accordance with IEEE/ANSI C62.41.2 guidelines. It shall be dimmable using a 0-10v signal. The driver shall have a minimum efficiency of 88%.

Installation

Four 3/8" diameter, hot-dipped galvanized "L" type anchor bolts shall be provided with the bollard for anchorage, they shall be mounted in a 3-1/4" bolt circle. The separate anchor base shall be 6" diameter and made of heavy wall, 319 alloy cast aluminum with a 5/8" thick floor. It shall be vertically fastened to bollard housing shaft with eight (8) stainless steel allen head screws.

Photocell

The photocell shall be mounted on the bollard shaft on an access plate. The electronic button type photocell is instant on with a 5-10 second turn off, and shall turn on at 1.5 footcandles with a turn-off at 2-3 footcandles. Photocell is 120-277 volt and warranted for 6 years.

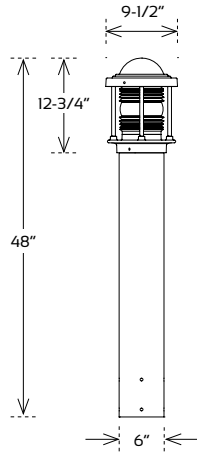
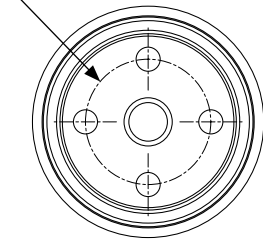
Warranty

Seven-year limited warranty. See product and finish warranty guide for details.

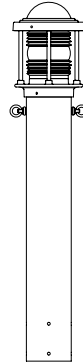
Finish

Refer to website for details.

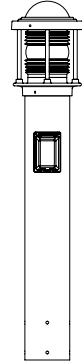
3-1/4" Bolt Circle



806LED-346B-48"



CL2
OPTIONAL
CHAIN LOOPS



GFI LPIUC
OPTIONAL
DUPLEX RECEPTACLE

Performance

LIGHT SOURCE	T3 DELIVERED LUMENS	EFFICACY (LPW)	T4 DELIVERED LUMENS	EFFICACY (LPW)	T5 DELIVERED LUMENS	EFFICACY (LPW)	WATTAGE
1L27T_-MDL04	805	47.4	845	49.7	865	50.9	17
1L30T_-MDL04	905	53.2	950	55.9	975	57.4	17
1L40T_-MDL04	935	55.0	980	57.6	1005	59.1	17
1L27T_-MDL02	455	45.5	480	48.0	490	49.0	10
1L30T_-MDL02	510	51.0	540	54.0	550	55.0	10
1L40T_-MDL02	525	52.5	555	55.5	565	56.5	10