

10' TO 30' SQUARE STRAIGHT STEEL POLES (SSS)

Job Name

Client Name

Job Location

Created By

Date

Product

Quote

Customer Approval

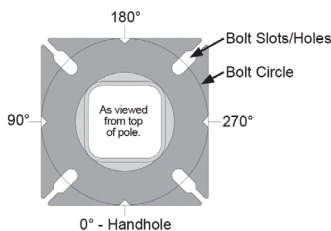
Date

Sternberg Model	Pole Height	Shaft Size	Wall Thickness	Slotted Base Width	Hand-hole Size	Weight Lbs	Bolt Circle	Bolt Proj +/- .25	DBL Nitted Anchor bolt ASTM F1554 GRADE 55 Galv thread	Max Loading Capacities								Base Cover Options
										90 MPH w/1.3 Gust		110MPH w/1.3 Gust		130MPH w/1.3 Gust		150MPH w/1.3 Gust		
										MAX EPA 1 (SQ FT)	MAX WEIGHT (lbs)	MAX EPA 1 (SQ FT)	MAX WEIGHT (lbs)	MAX EPA 1 (SQ FT)	MAX WEIGHT (lbs)	MAX EPA 1 (SQ FT)	MAX WEIGHT (lbs)	
SSS10F400	10	4	11GA	8.25"	2.5 x 5	75	8.5"	3.5	3/4"	23.8	595	15.0	375	10.0	250	7.1	178	2403-4, ML900-4
SSS12F400	12	4	11GA	8.25"	2.5 x 5	90	8.5"	3.5	3/4"	18.8	470	11.5	288	7.5	188	5.0	25	2403-4, ML900-4
SSS14F400	14	4	11GA	8.25"	2.5 x 5	100	8.5"	3.5	3/4"	15.1	378	9.1	228	5.6	140	3.4	85	2403-4, ML900-4
SSS16F400	16	4	11GA	8.25"	2.5 x 5	115	8.5"	3.5	3/4"	11.8	295	6.8	170	3.9	98	1.9	48	2403-4, ML900-4
SSS18F400	18	4	11GA	8.25"	2.5 x 5	125	8.5"	3.5	3/4"	9.2	230	5.0	125	2.4	60	0.4	10	2403-4, ML900-4
SSS20F400	20	4	11GA	8.25"	2.5 x 5	140	8.5"	3.5	3/4"	6.7	167	3.5	88	0.8	20	-	-	2403-4, ML900-4
SSS20N400	20	4	7GA	8.25"	2.5 x 5		8.5"	3.63	3/4"	12.4	350	7.6	190	4.5	113	2.5	63	2403-4, ML900-4
SSS20F500	20	5	11GA	11"	2.5 x 5	185	11"	3.75	3/4"	12.7	343	7.0	175	3.5	88	0.9	25	2403-5, ML900-5
SSS20N500	20	5	7GA	11"	2.5 x 5	265	11"	3.75	3/4"	21.4	535	12.3	308	7.3	183	4.2	105	2403-5, ML900-5
SSS25F400	25	4	11GA	8.25"	2.5 x 5	170	8.5"	3.5	3/4"	2.6	100	-	-	-	-	-	-	2403-4, ML900-4
SSS25N400	25	4	7GA	8.25"	2.5 x 5	245	8.5"	3.63	3/4"	7.7	188	3.9	100	1.6	40	0.2	5	2403-4, ML900-4
SSS25F500	25	5	11GA	11"	2.5 x 5	225	11"	3.75	3/4"	6.3	157	2.5	63	-	-	-	-	2403-5, ML900-5
SSS25N500	25	5	7GA	11"	2.5 x 5	360	11"	3.75	3/4"	13.3	333	6.6	165	2.9	75	-	-	2403-5, ML900-5
SSS30F500	30	5	11GA	11"	2.5 x 5	265	11"	3.75	3/4"	2.0	50	-	-	-	-	-	-	2403-5, ML900-5
SSS30N500	30	5	7GA	11"	2.5 x 5	380	11"	3.75	3/4"	6.7	167	2.5	63	-	-	-	-	2403-5, ML900-5

CROSS SECTION	MODEL NUMBER	FIXTURE MOUNTING	BASE COVER	OPTIONS	COLOR
SSS					
SSS = Square Straight Steel	SSS10F400 SSS20N500 SSS12F400 SSS25F400 SSS14F400 SSS25N400 SSS16F400 SSS25F500 SSS18F400 SSS25N500 SSS20F400 SSS30F500 SSS20N400 SSS30N500 SSS20F500	Drill Mounting D1 = 1 Luminaire D2 = 2 @ 180° D4 = 4 @ 90° D5 = 2 @ 90° D6 = 3 @ 90° Tenon Mounting P2 = 2.38" OD x 4.00" P3 = 3.00" OD x 3.00" P4 = 4.00" OD x 6.00" P5 = 4.25" OD x 3.50" P6 = 3.25" OD x 3.50"	2403-4 2403-5 ML900-4 ML900-5	See Accessories at www.sternberglighting.com (Please specify with code)	UBKT - Urban Black Textured UBT - Urban Bronze Textured ULBT - Urban Light Bronze Textured USLT - Urban Silver Textured UWHT - Urban White Textured UCHS - Urban Champagne Satin Smooth UBK - Urban Black Matte UB - Urban Bronze Matte ULB - Urban Light Bronze Matte USL - Urban Silver Matte UWH - Urban White Matte



Anchor Base Detail

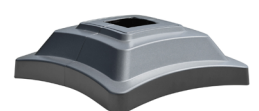


4" or 5" Rounded Corner Profile .75" Corner Radius

OPTIONAL BASE COVERS



Square 2403
 13" Sq. x 6-1/2" H
 Throat Size 4" or 5" Sq.
 2403-4
 2403-5



Square ML900
 17.4" Sq. x 5.9" H
 Throat Size 4" or 5" Sq.
 ML900-4
 ML900-5

